

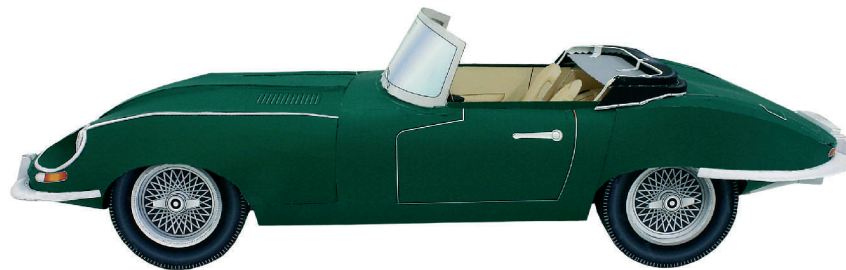
PAPER CRAFT

<http://www.canon.com/c-park/en/>

sheet-1



● View of complete model



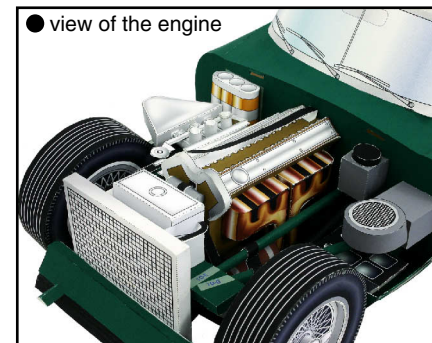
● View of complete model (Side view)



● View of complete model (Front view)



● View of complete model (Back view)



● view of the engine



● view of the cockpit

JAGUAR E-TYPE

"Jaguar E-type" is one of the most well-known models produced by British sports car maker Jaguar, founded in 1922. This model was highly regarded at the Geneva International Motor Show in March 1961 for its low-set, streamlined appearance and state-of-the-art mechanics. Series 1, which first went on the market in 1961, sported an inline six-cylinder, 3.8 liter DOHC engine. In 1964, this was upgraded to a 4.2 liter. Various minor changes up until 1971 resulted in the twin-six engine of the Series 3. This model, known in the US as the XK-E, enjoyed high levels of popularity. Although the E-type disappeared from the market in 1975, its curved lines continued to influence designers, and it remained well-loved by car enthusiasts around the world. This Papercraft JAGUAR E-type is about one thirteen the size of the real car.

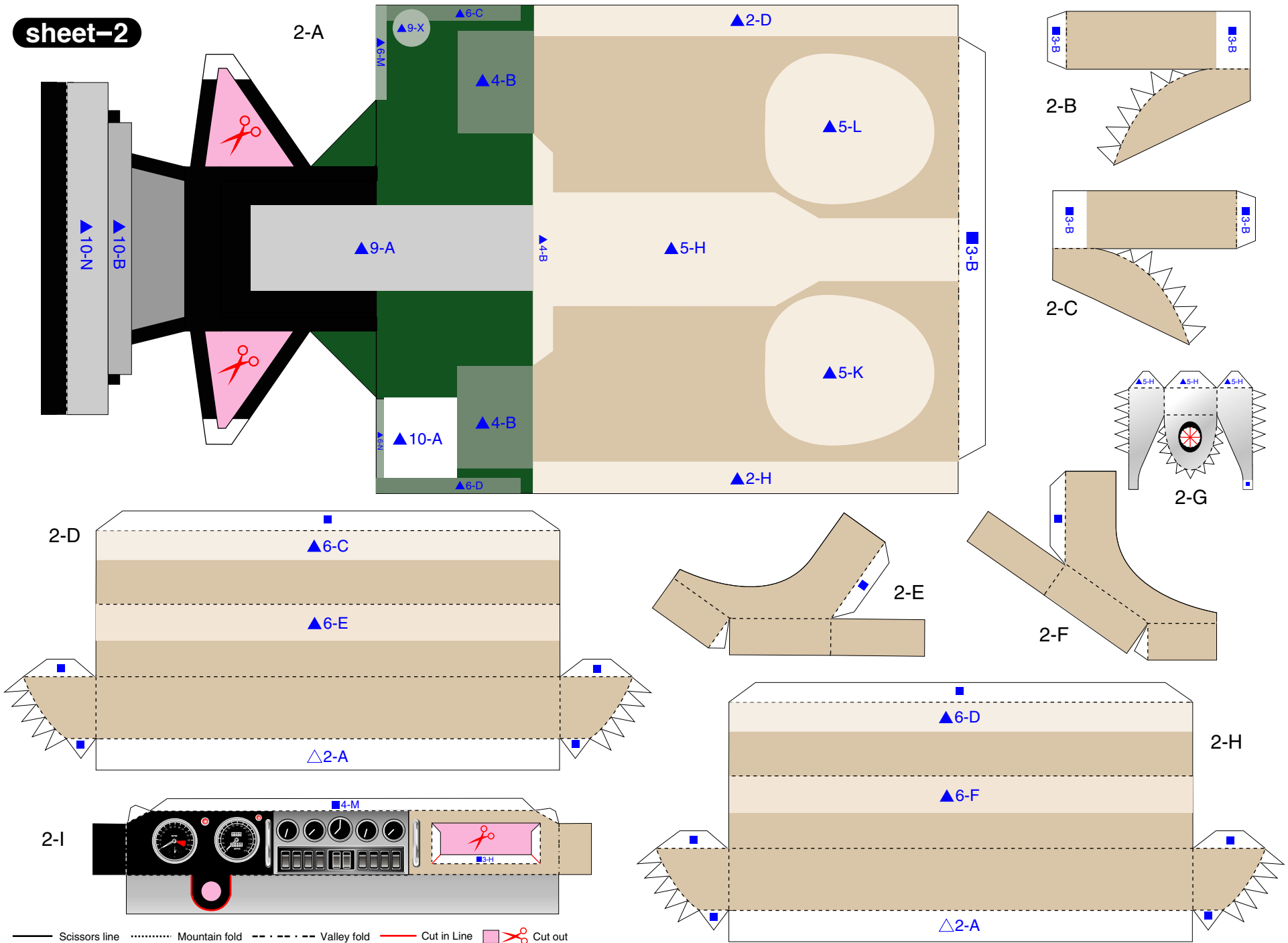
*This model was designed for Papercraft and may differ from the original in some respects.

■ Parts list (Pattern) : Fifteen A4 sheets (No.1 ~ No.15)

■ No. of Parts: 268

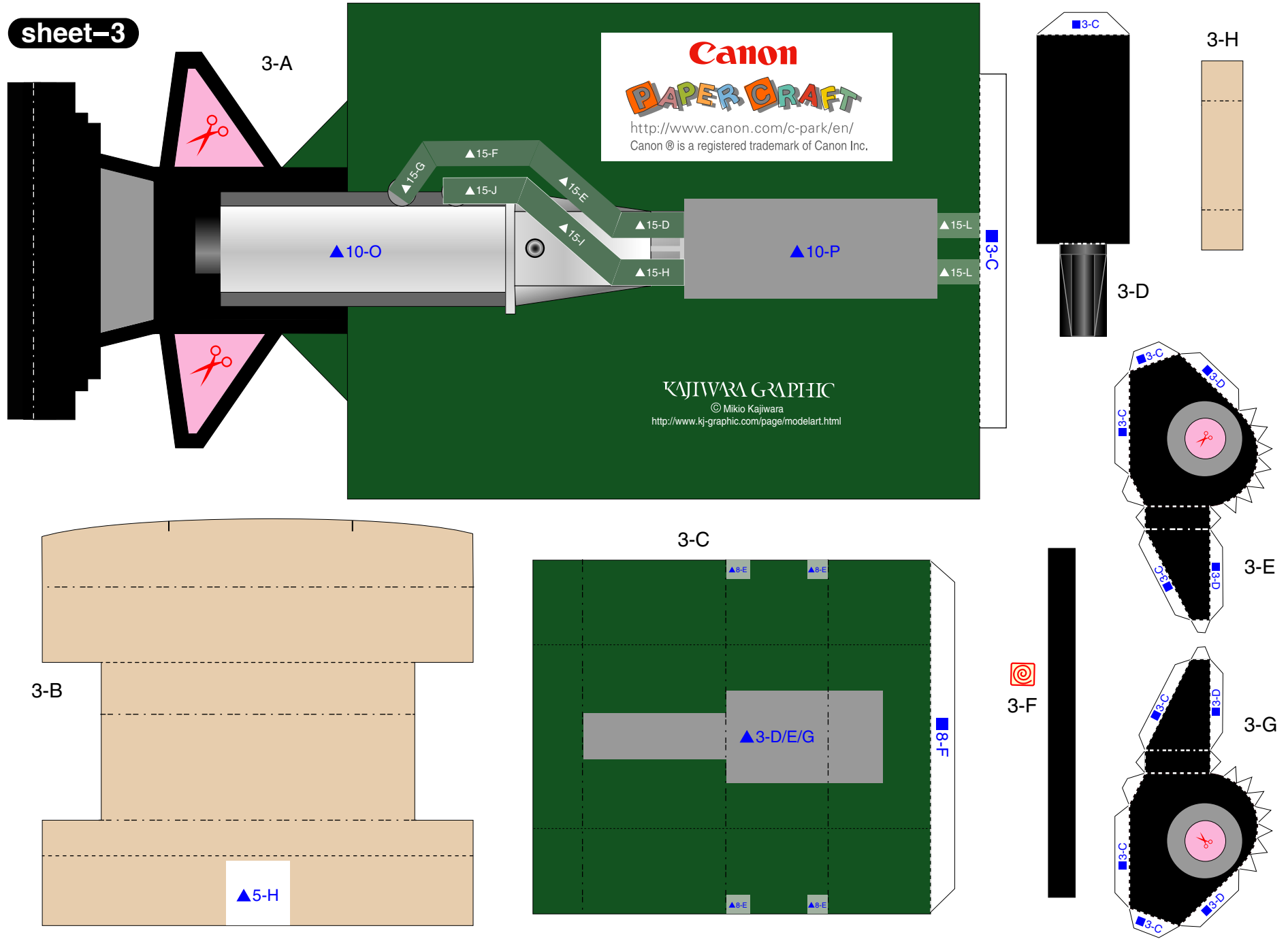
*Build the model by carefully reading the Assembly Instructions, in the parts sheet page order.

sheet-2



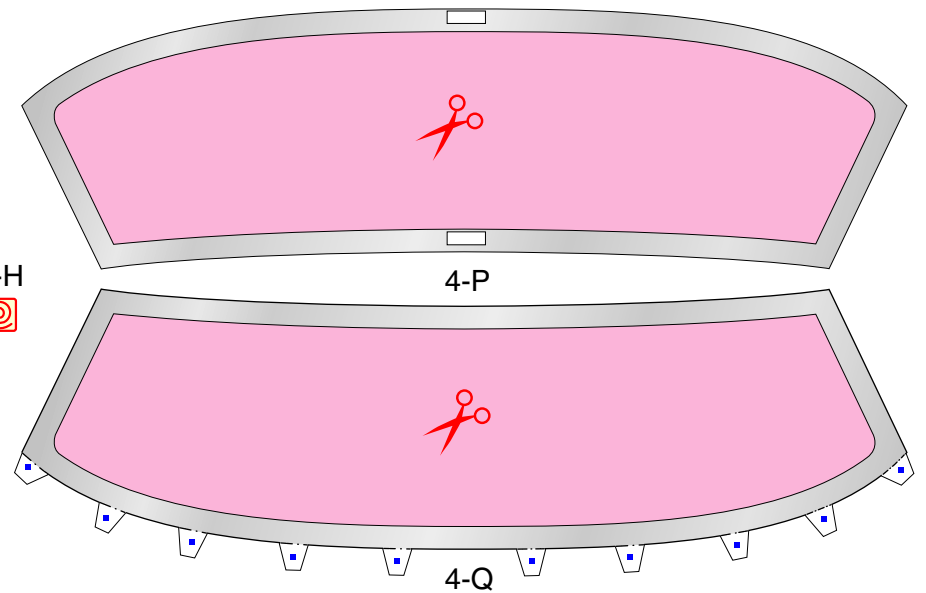
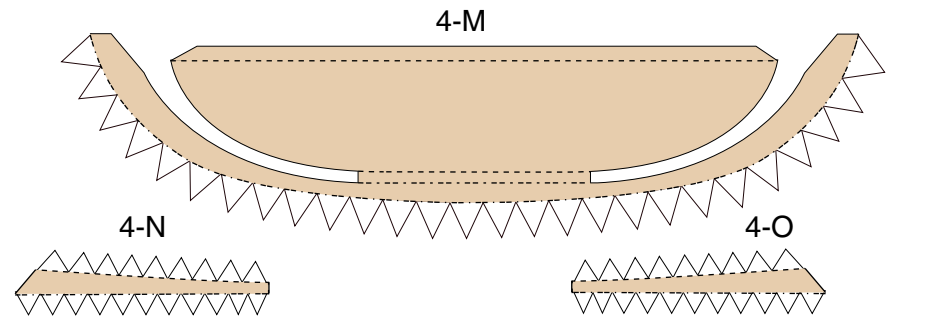
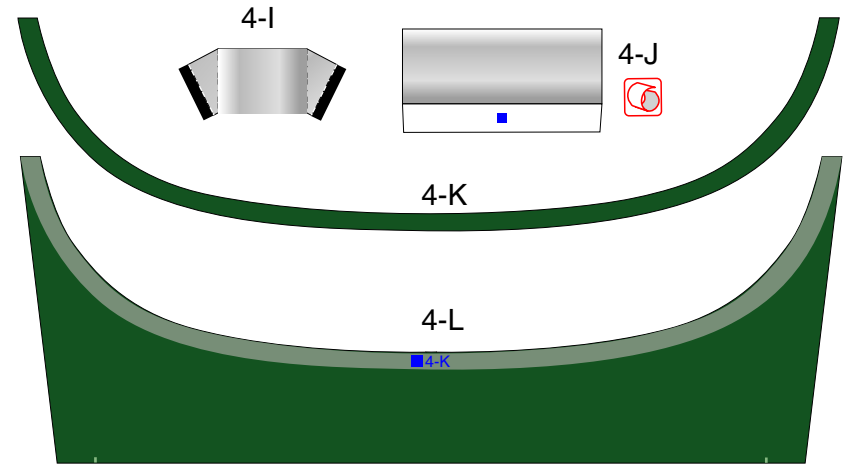
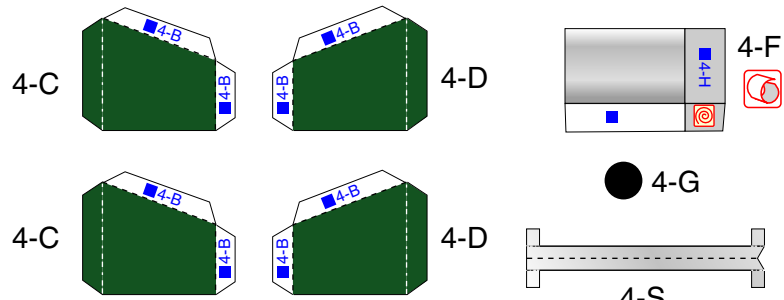
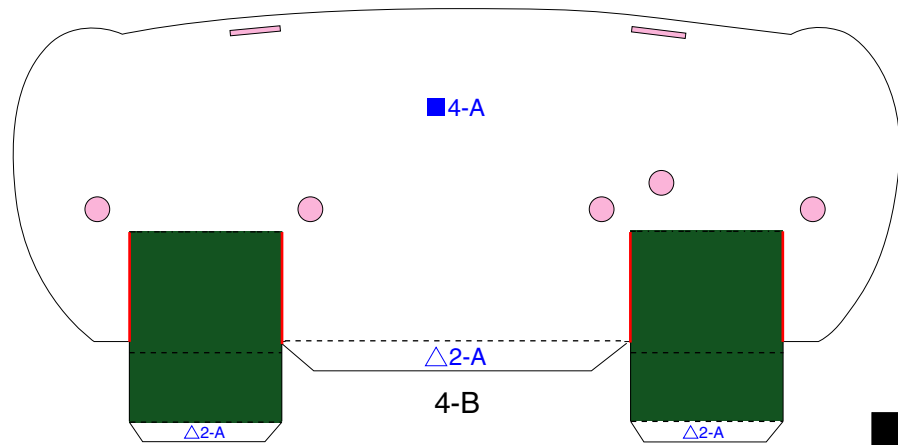
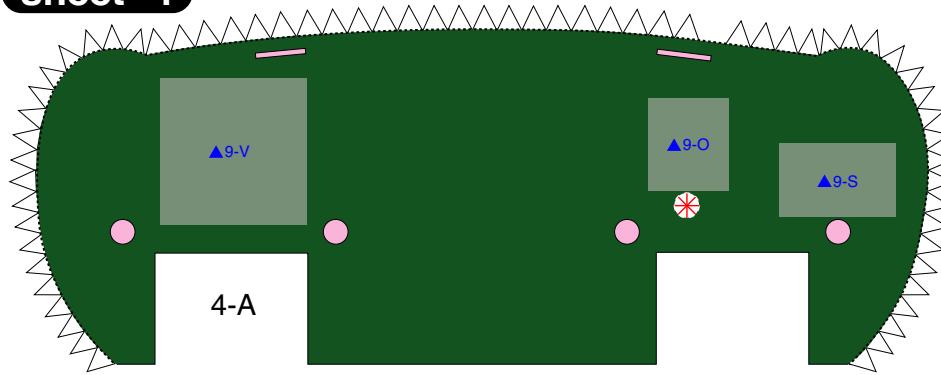
— Scissors line Mountain fold - - - - - Valley fold ——— Cut in Line Cut out

sheet-3

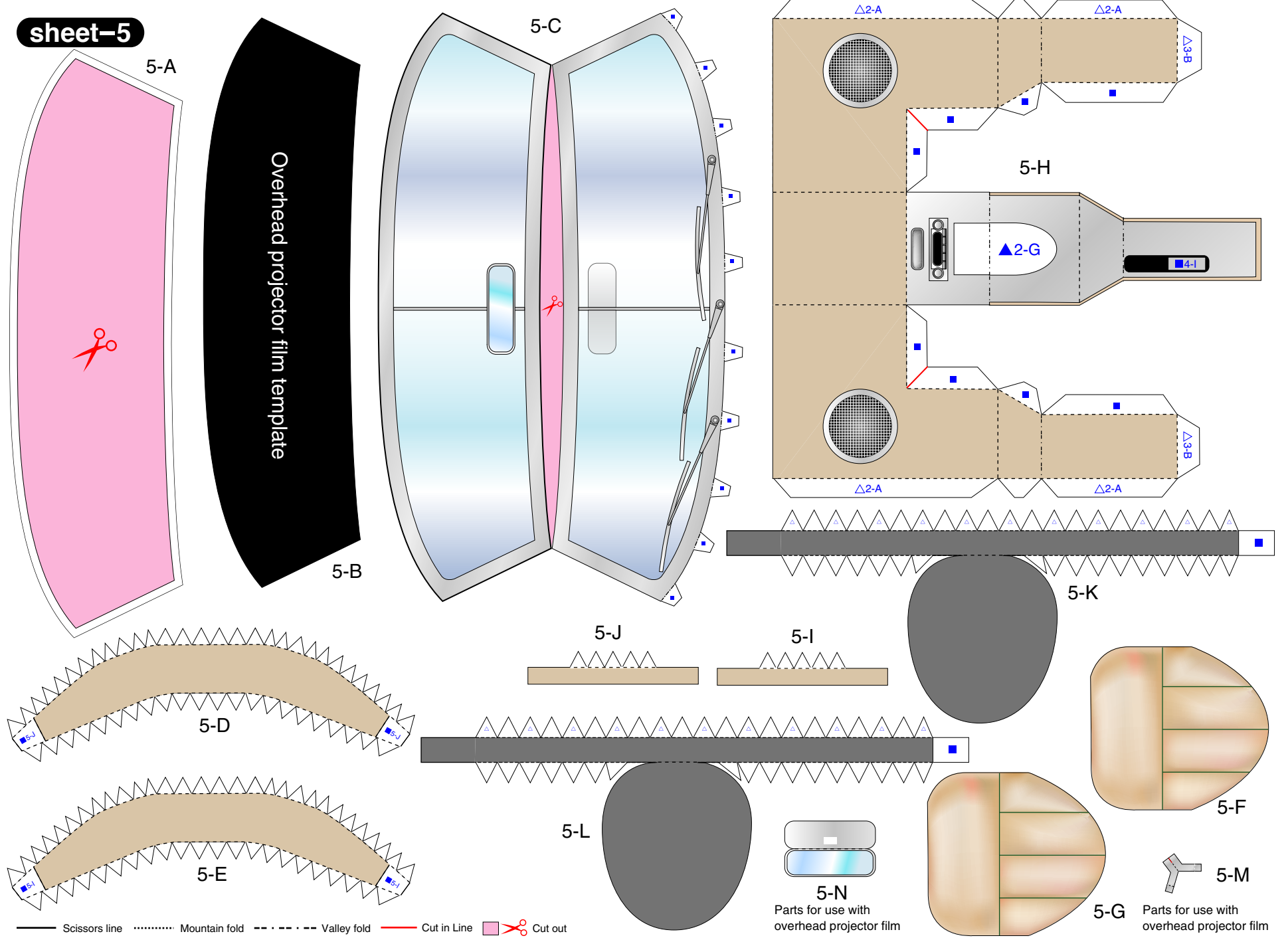


— Scissors line Mountain fold - - - - - Valley fold ——— Cut in Line Cut out

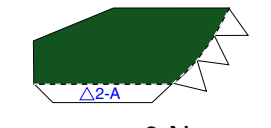
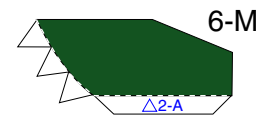
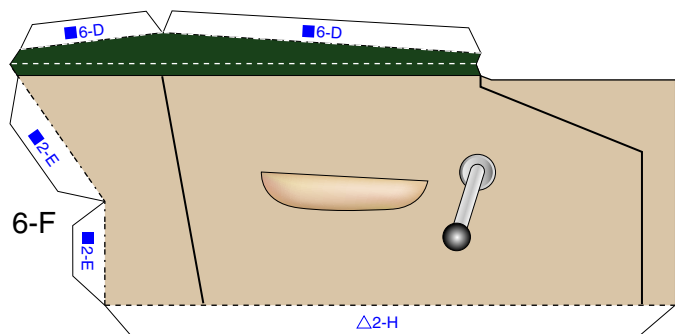
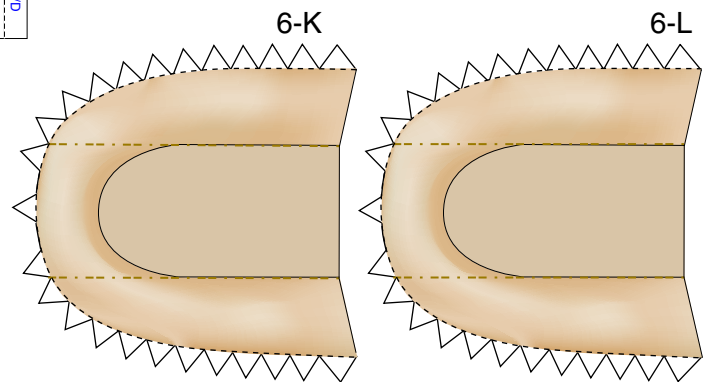
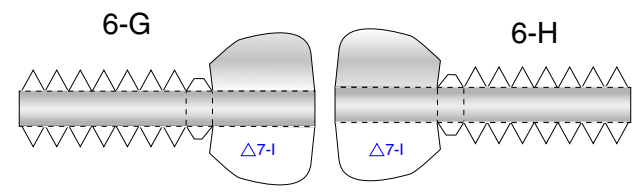
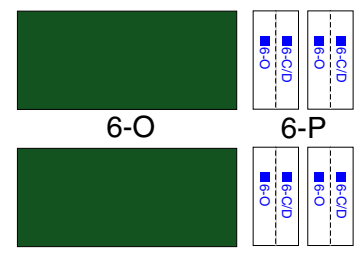
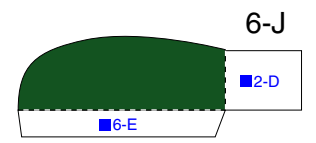
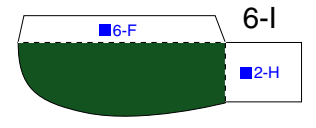
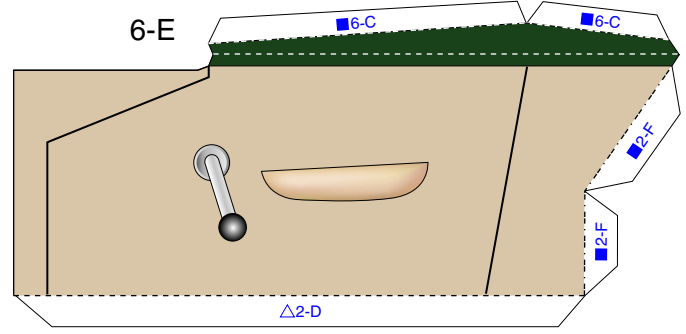
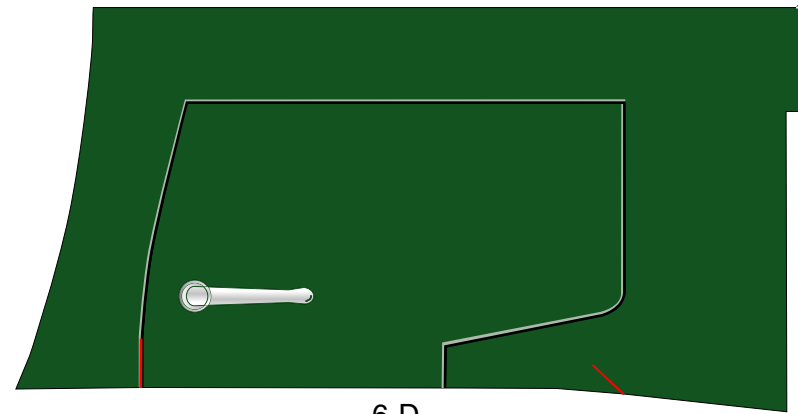
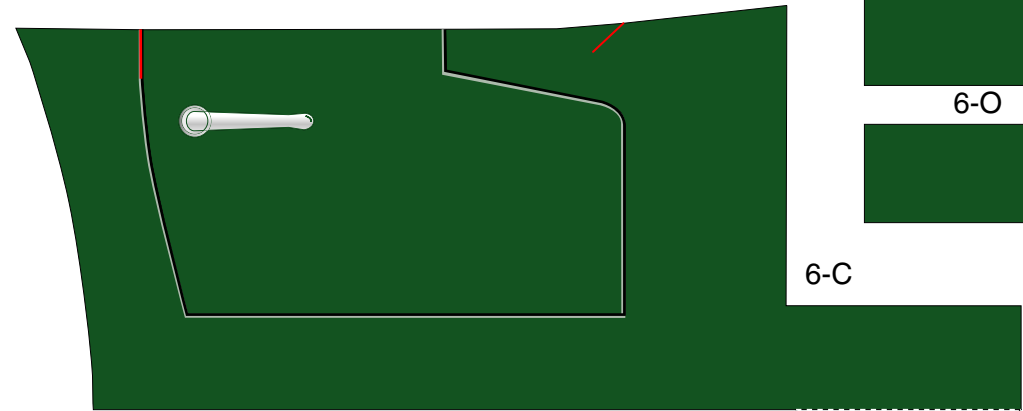
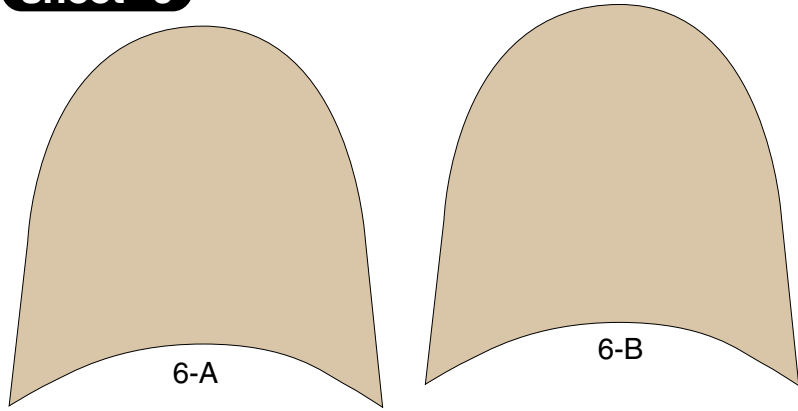
sheet-4



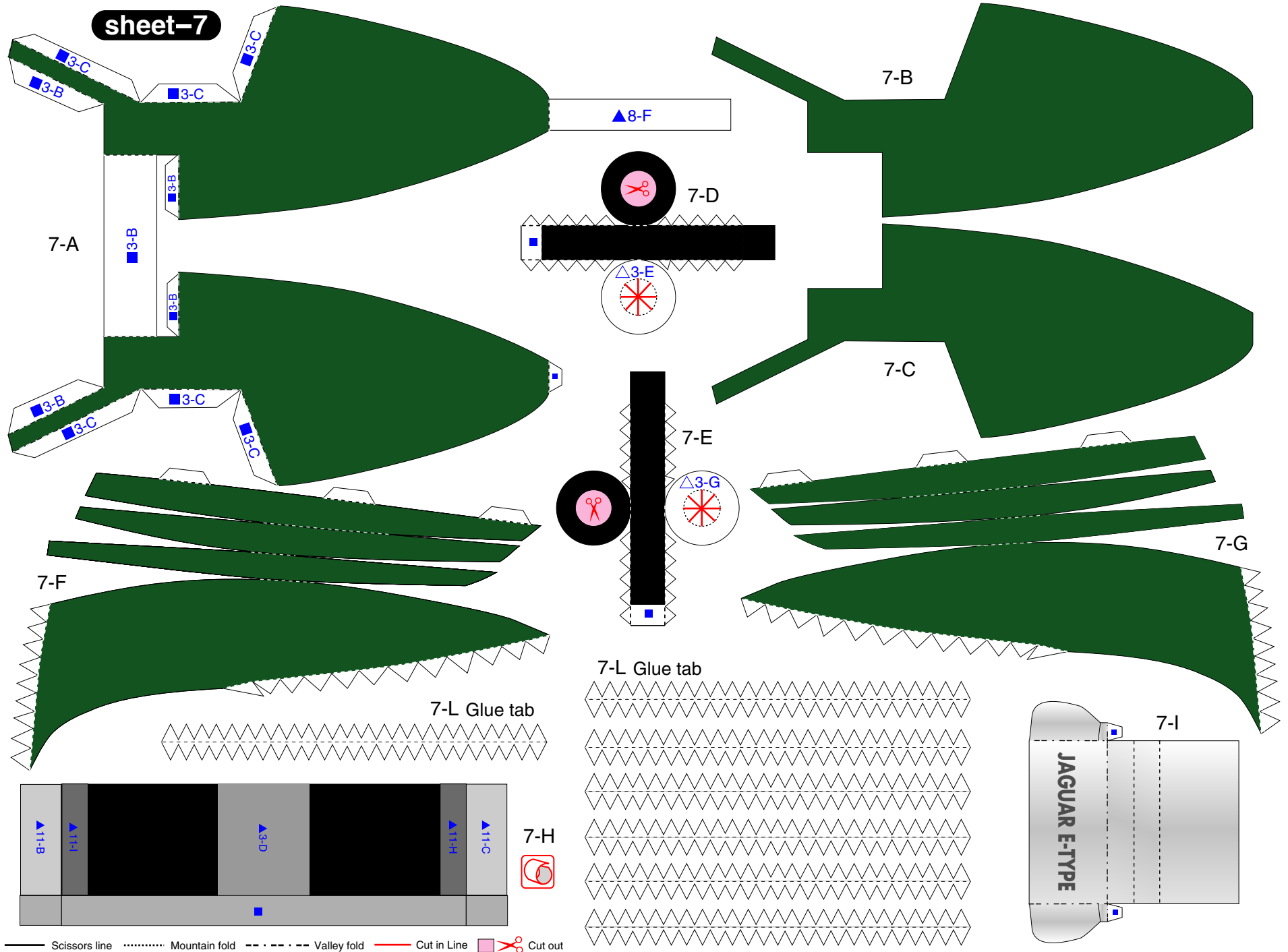
sheet-5



sheet-6



— Scissors line Mountain fold - - - - - Valley fold ——— Cut in Line ✂ Cut out



sheet-7

7-A

7-B

7-C

7-D

7-E

7-F

7-G

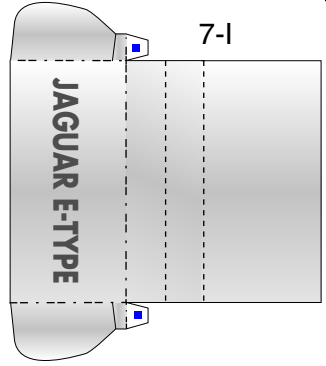
7-L Glue tab

7-L Glue tab

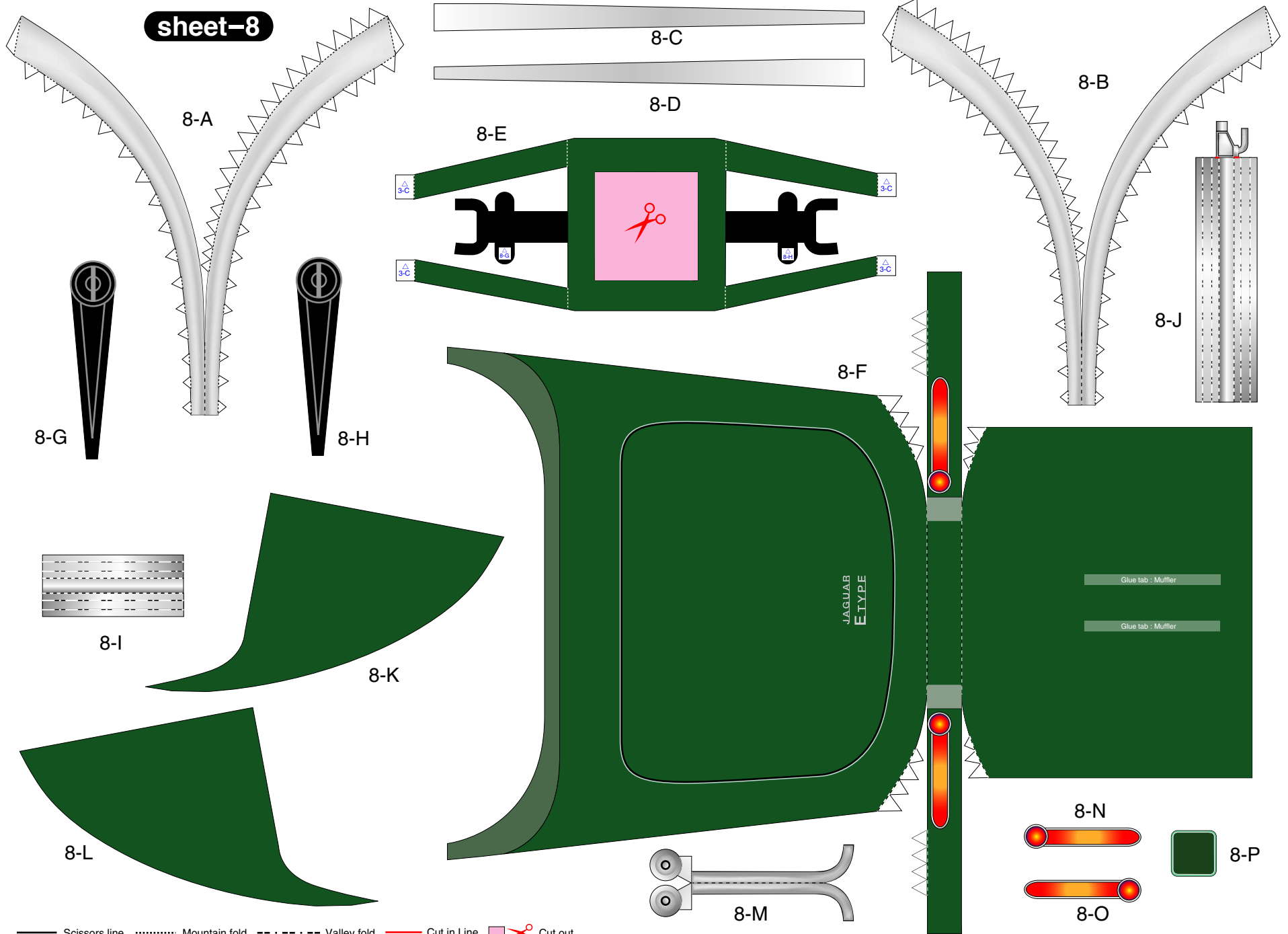
7-H

7-I

— Scissors line Mountain fold - - - - - Valley fold ——— Cut in Line Cut out

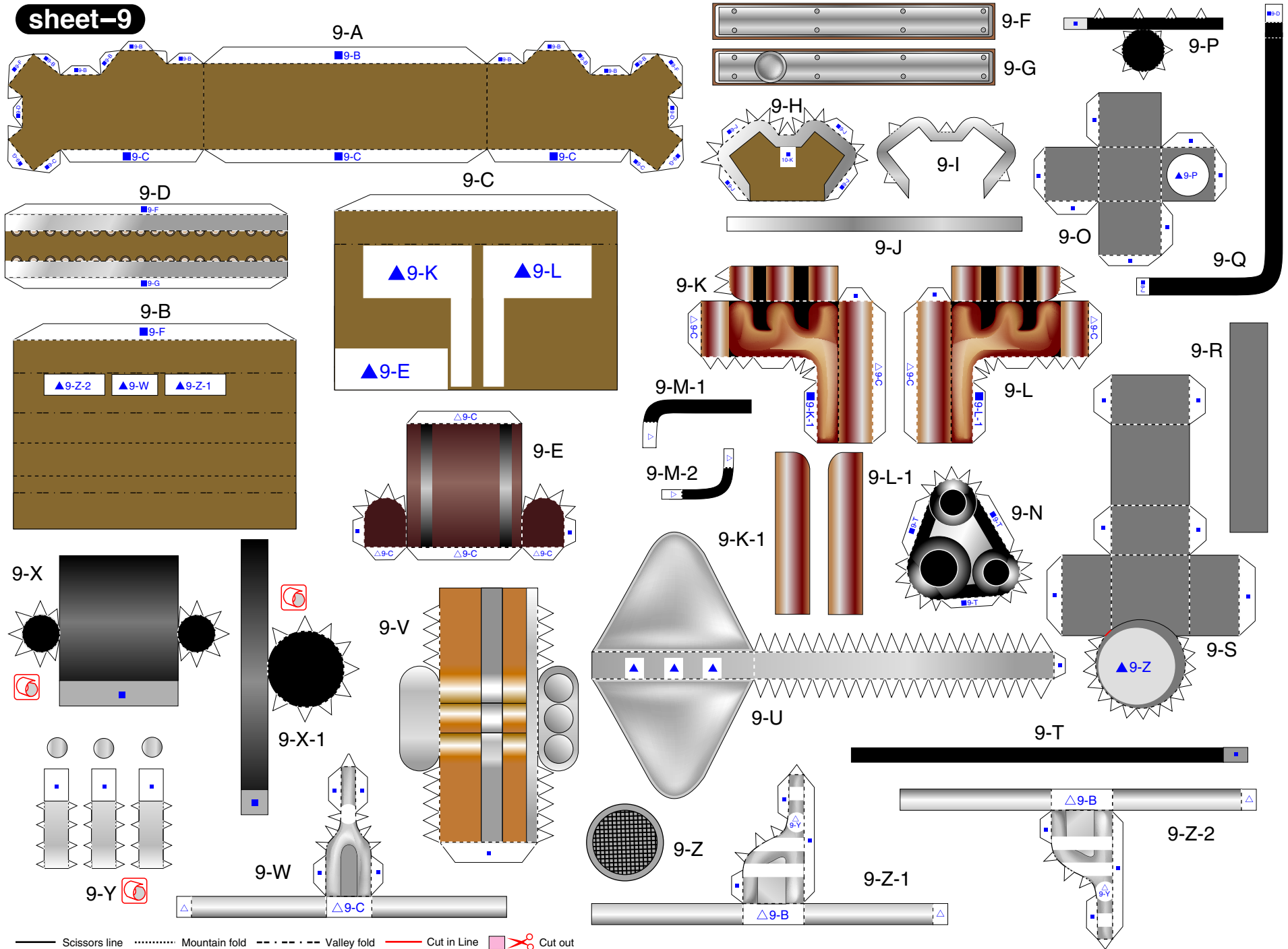


sheet-8



— Scissors line Mountain fold - - - - - Valley fold ——— Cut in Line Cut out

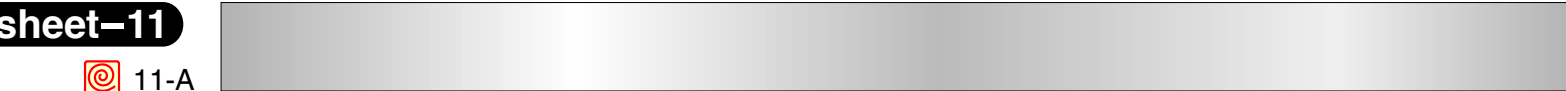
sheet-9



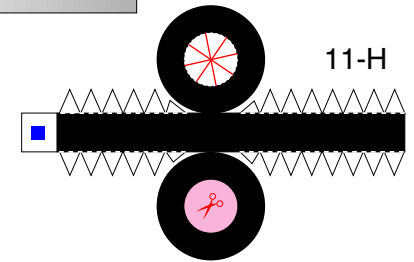
Scissors line
 Mountain fold
 Valley fold
 Cut in Line
 Cut out

sheet-11

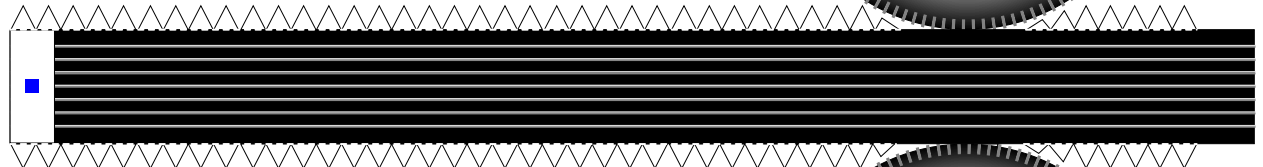
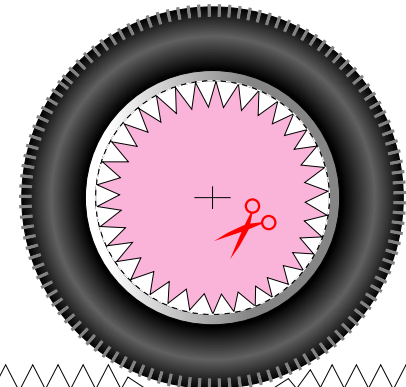
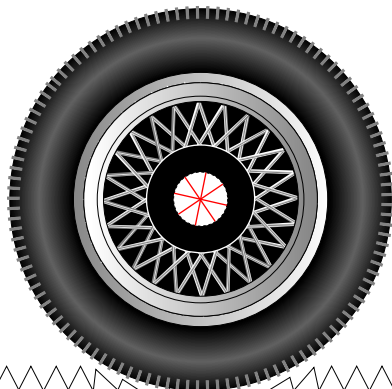
11-A



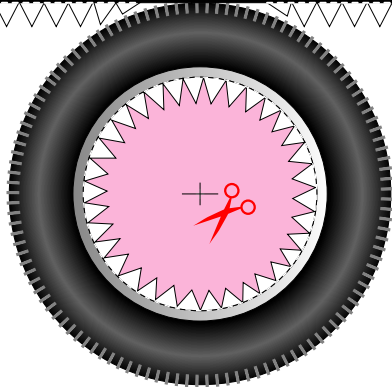
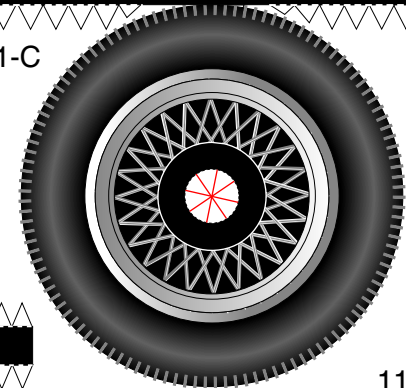
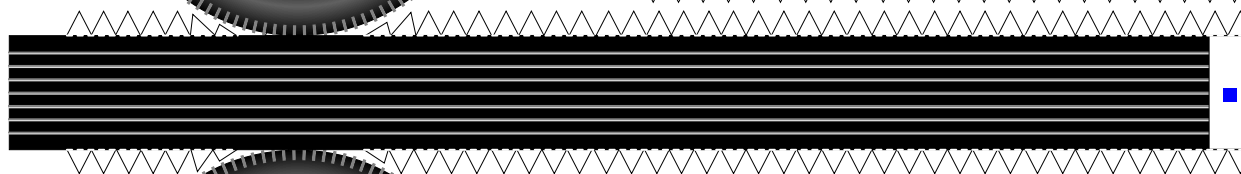
11-D



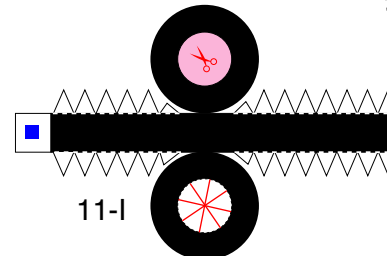
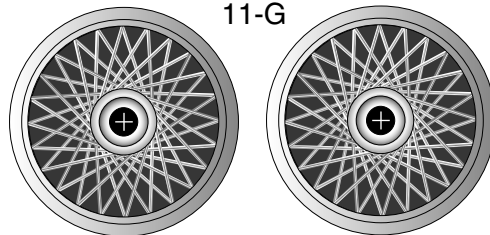
11-B



11-C

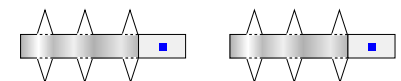


11-G

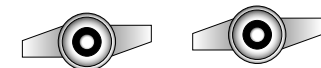


11-I

11-F



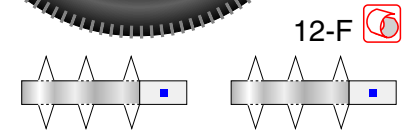
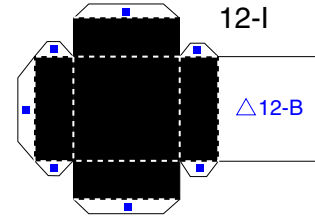
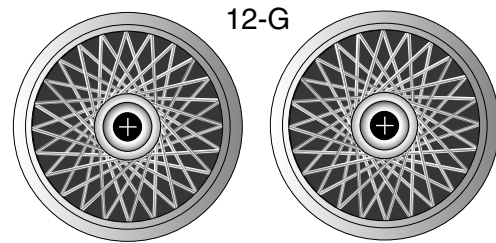
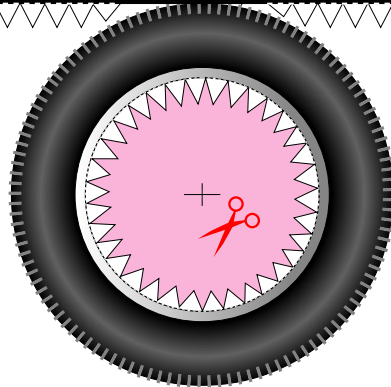
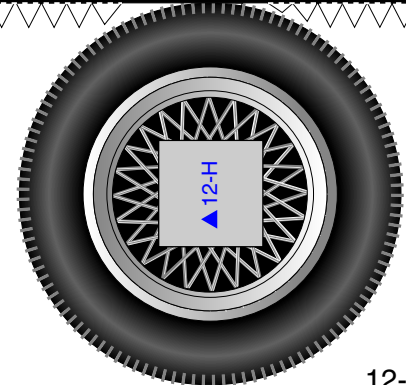
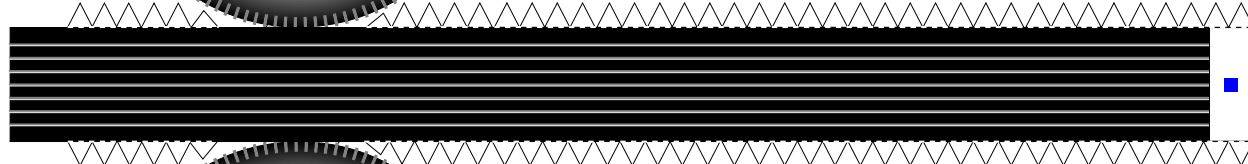
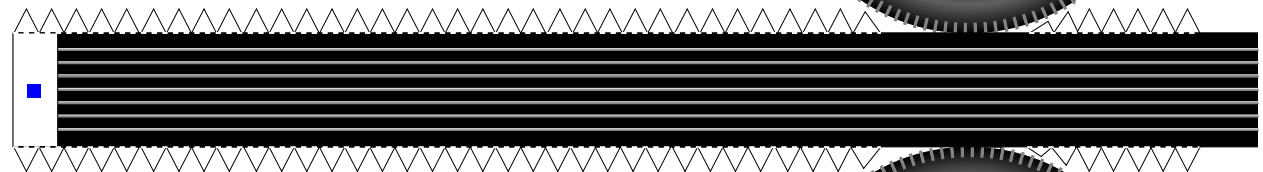
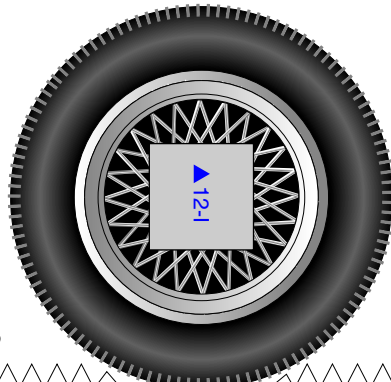
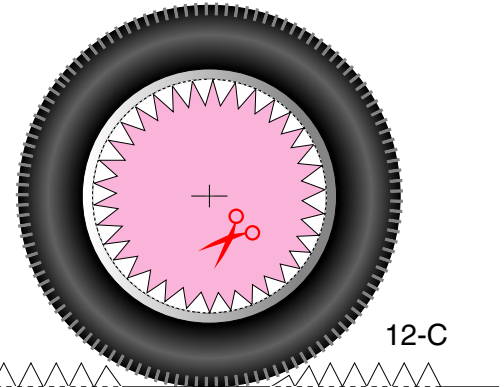
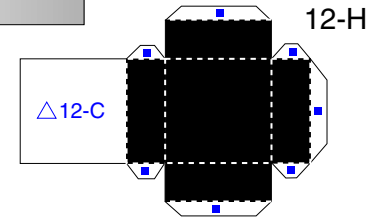
11-E



— Scissors line Mountain fold - - - - - Valley fold — Cut in Line ✂ Cut out

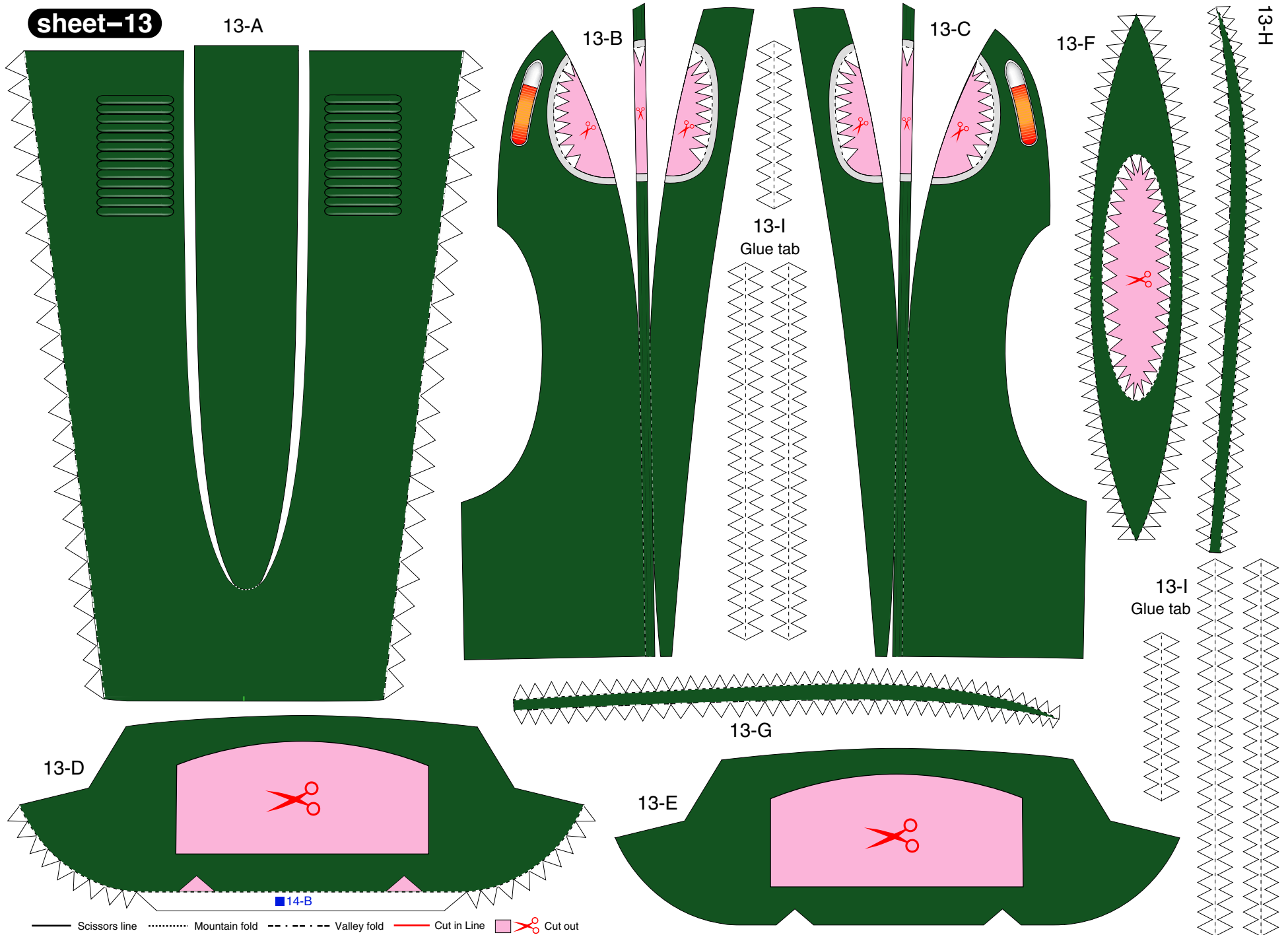
sheet-12

12-A



— Scissors line Mountain fold - - - - - Valley fold ——— Cut in Line Cut out

sheet-13



13-A

13-B

13-C

13-F

13-H

13-I
Glue tab

13-I
Glue tab

13-D

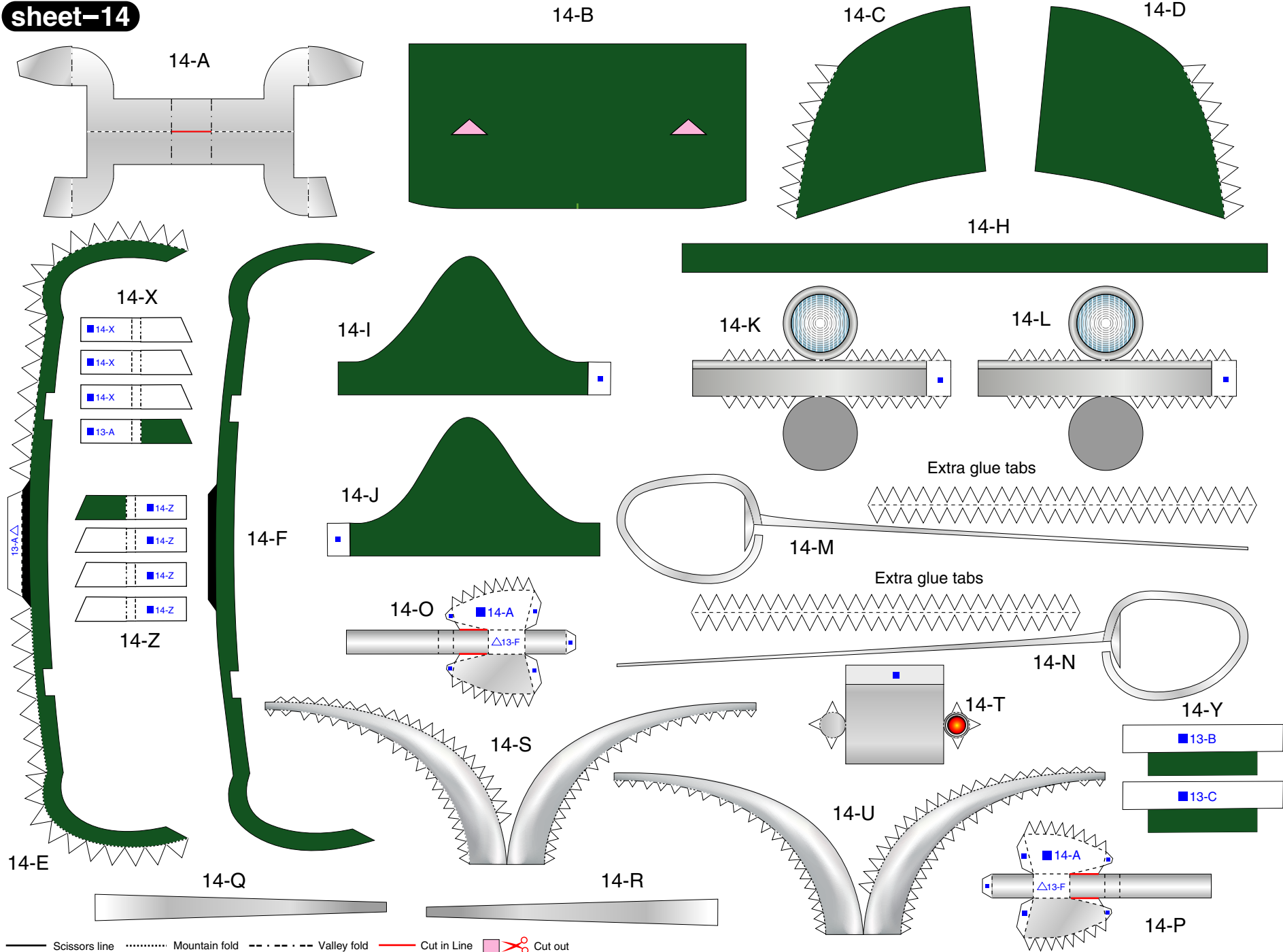
13-G

13-E

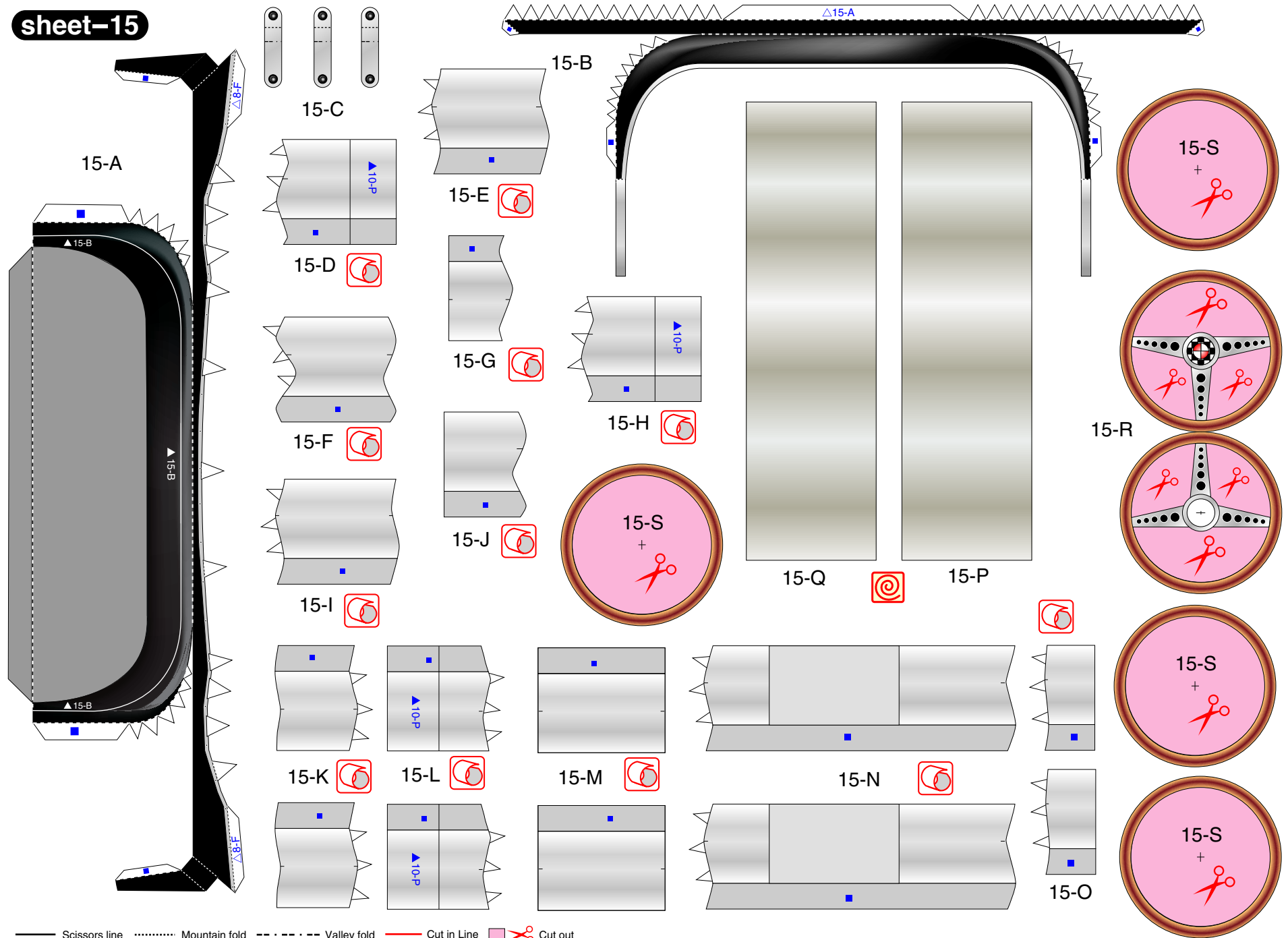
14-B

— Scissors line Mountain fold - - - - - Valley fold ———— Cut in Line ■■■■■ Cut out

sheet-14



sheet-15



— Scissors line Mountain fold - · - · - Valley fold — Cut in Line Cut out