

Tower Bridge, England: Assembly Instructions

Canon ® is a registered trademark of Canon Inc. © Canon Inc. © T.Ichiyama



PAPER CRAFT

<http://www.canon.com/c-park/en/>

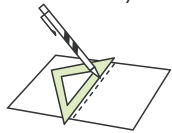


View of completed model

*This model was designed for Papercraft and may differ from the original in some respects.

Assembly Instructions: Four A4 sheets (No. 1 to No. 4)

*Build the model by carefully reading the Assembly Instructions, in the parts sheet page order.



*Hint: Trace along the folds with a ruler and an exhausted pen (no ink) to get a sharper, easier fold.

Assembly Instructions



Mountain fold (dotted line)
Make a mountain fold.



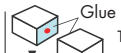
Valley fold (dashed and dotted line)
Make a valley fold.



Scissors line (solid line)
Cut along the line.



Cut in line (solid line)
Cut along the line.



Glue
The glue spot (colored dot) shows where to apply the glue.

Glue spot (Red dot)

Glue parts with the same number together.

Glue spot (Green dot)

Glue within the same part.

Glue spot (Blue dot)

Glue to the rear of the other part.

Tools and materials



Scissors, set square, glue (We recommend stick glue), pencil, used ballpoint pen, toothpicks, tweezers, (useful for handling small parts)

Assembly tip



Before gluing, create the paper along mountain fold and valley fold lines and make sure rounded sections are nice and stiff.

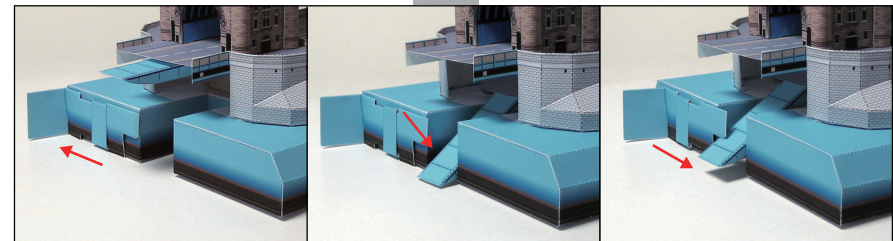
Caution



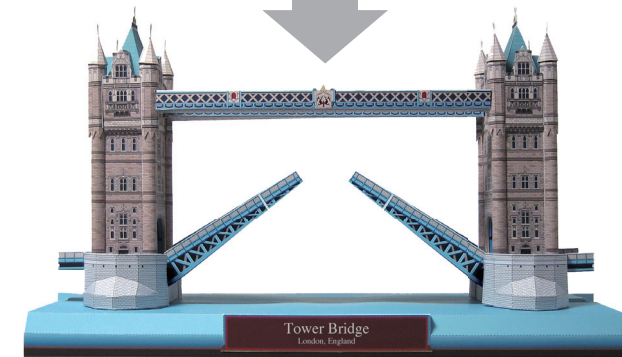
Glue, scissors and other tools may be dangerous to young children so be sure to keep them out of the reach of young children.

Before starting assembly: Writing the number of each section on its back side before cutting out the sections is highly recommended.
(* This way, you can be sure which section is which even after cutting out the sections.)

How to move the bridge girders: When this model is finished, you can move the bridge girders.

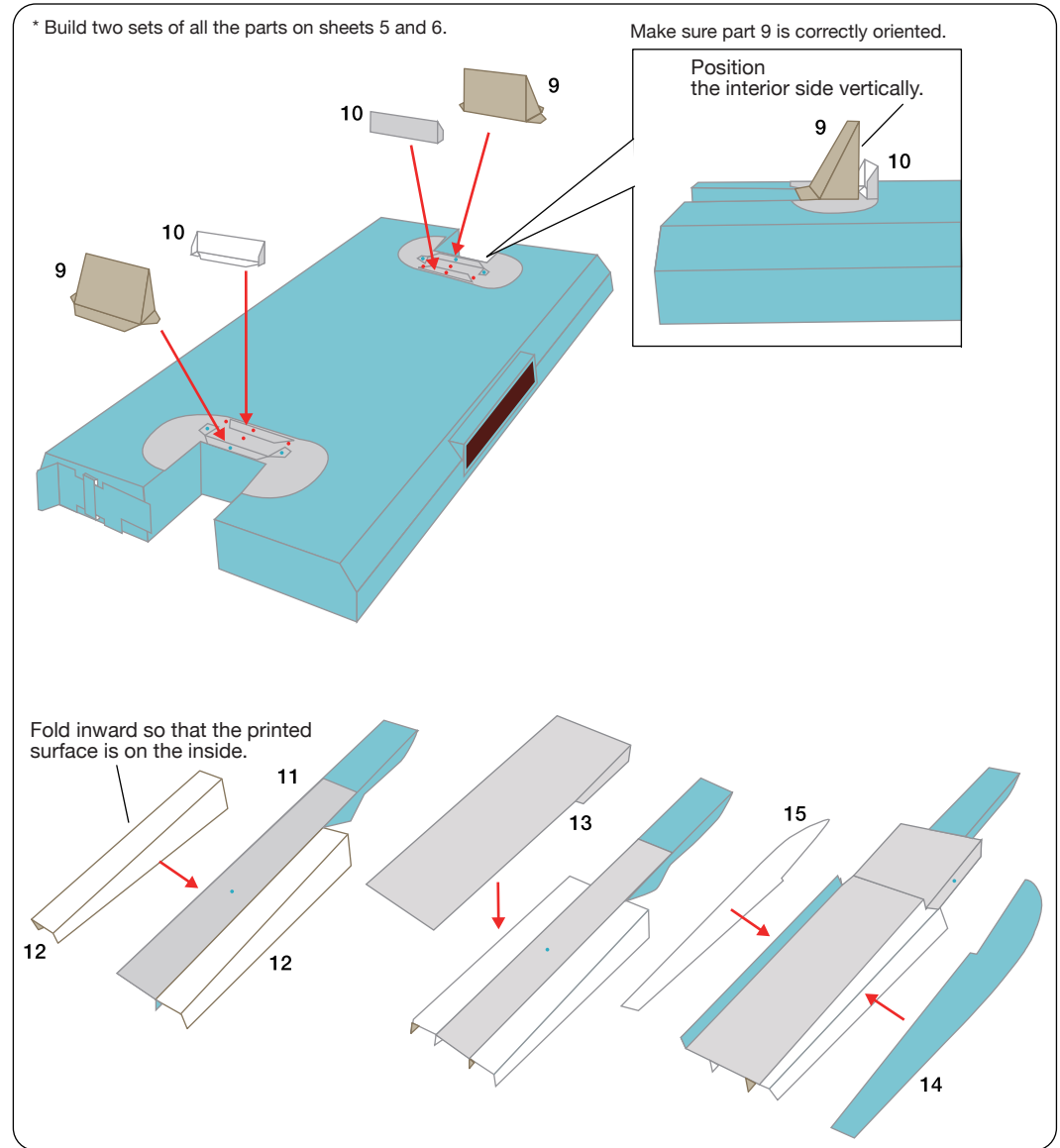
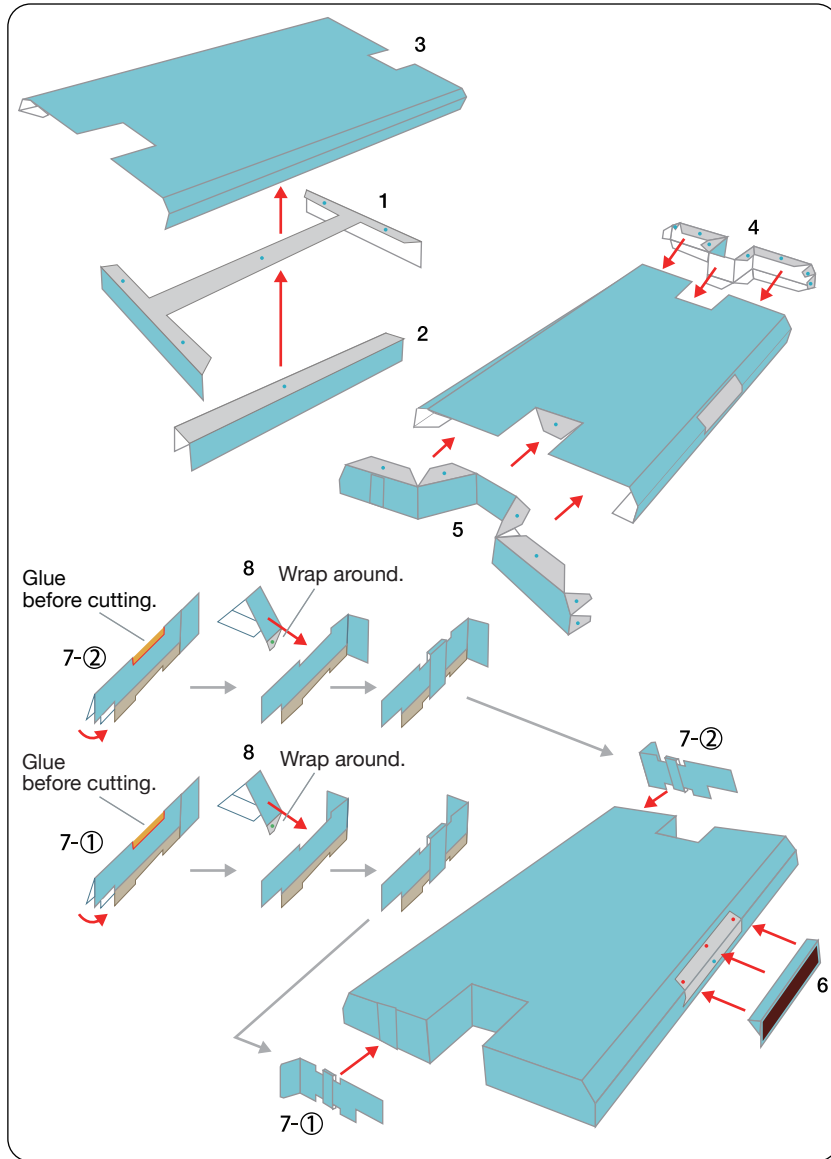


Make sure the latch is open. Depress the lever on the side. Close the latch.



Tower Bridge, England: Assembly Instructions

→ Indicates where sections should be glued together.



Tower Bridge, England: Assembly Instructions

Canon ® is a registered trademark of Canon Inc. © Canon Inc. © T.Ichiyama



* Build two sets of all the parts on sheets 5 and 6.

Position in place at the opening.

At this time, adjust the bridge to minimize distortion.

Be careful to ensure parts 18 and 19 do not protrude!

Check to make sure the bridge can move when attaching the bridge girders.

* Build two sets of all the parts on sheets 7 and 8.

Glue in place so that the part shown in the illustration protrudes.

Make sure parts 26 and 27 are correctly oriented
The cut end is straight
The cut end features a notch

Tower Bridge, England: Assembly Instructions

* Build two sets of all the parts on sheets 7 and 8.

Make sure the parts are correctly oriented.
Parts 34 and 35 are attached to the interior side.

Make sure the parts are correctly oriented.

Double-decker bus

Finished!